



www.loadsystems.co.uk

# COMBO-Kits

Portable, flexible & ready right out of the box.



**RENT IT**  
OR  
**BUY IT**



## Options



Wireless & Internal Antenna



Matched Telemetry Displays



Rent this item



Cabled with 49.2ft flying cable



Data Logging Software Available



ATEX version

When you need a load monitoring kit onsite that can be tailored for low head height situations, right out of the box. Literally.

## Current Range

**3.25 Te Load Cell COMBO Kit.**

**4.75 Te Load Cell COMBO Kit.**

**6.5 Te Load Cell COMBO Kit.**

**13.5 Te Load Cell COMBO Kit.**

**17 Te Load Cell COMBO Kit.**

## Combo-Kit Contains

- Rugged case design with foam compartments to firmly hold the load link, telemetry display.
- 1 x T24 HA Handset (Can operate with both Load Link or Load Pin).
- 1 x Aluminium Load Link complete with calibration certificate.
- 2 x Safety Bow Shackles.
- 1 x Shackle Load PIN complete with calibration certificate.
- 1 x centralising Bobbin.
- Spare Battery Set.

## Load Monitoring Systems Ltd

14 Silverburn Place,  
Bridge of Don,  
Aberdeen  
AB23 8EG

✉ sales@loadsystems.co.uk

☎ +44 (0) 1224 446100

**FAST-TRACK**  
SERVICE AVAILABLE CALL FOR DETAILS



## Features

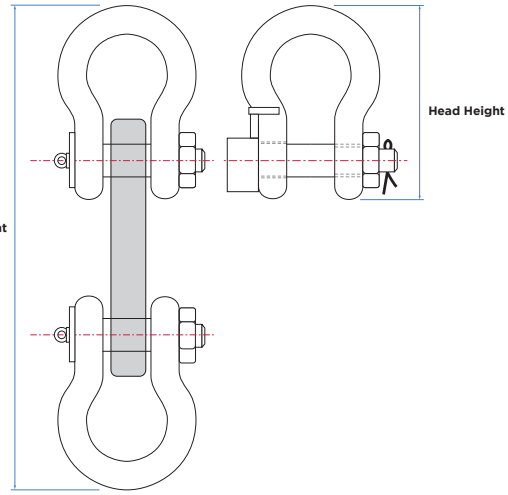
- All of the equipment supplied in a custom transport case.
- Load Link concept can be used for greater accuracy with adequate head space.
- Load Shackle concept can be used when lower head space is required.
- Only one wireless handset is required.

## Optional Accessories

- Wireless Data Logging Kit. (Including Wireless Base station receiver and Logging Software )

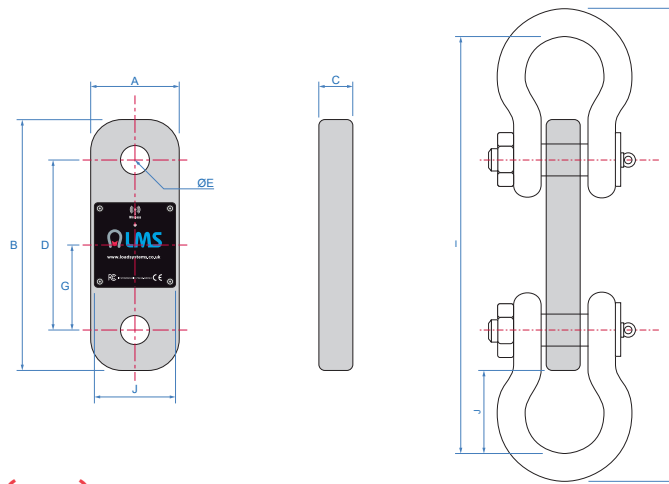


www.loadsystems.co.uk



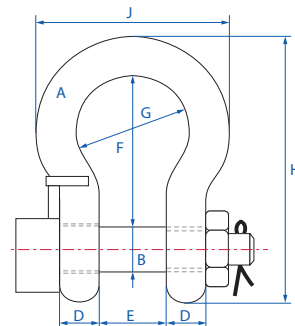
### Head Height Comparison (mm)

Dimensions (mm)					
Capacity Te	3.25	4.75	6.5	13.5	17
Load Link	312	345	397	556	592
Load Pin Shackle	110	129	143	227	249



### Load Link Dimensions (mm)

Dimensions (mm)											
Capacity Te	A	B	C	D	E $\varnothing$	G	Weight (Kg)	H (Head Height)	I	J	Combined Weight (Kg)
3.25	60	183	31	133	20	66.5	0.6	312	280	48.5	2.1
4.75	60	183	31	133	23	66.5	0.6	345	307	62	2.5
6.5	84	238	32	162	27	81	1.5	397	353	57.5	5.04
13.5	84	292	45	182	40	91	6	556	486	97	19.08
17	93	302	50	182	43	91	6.5	592	516	107	22.88



### Load Pin Shackle (mm)

Dimensions (mm)									
Capacity Te	A	B	D	E	F	G	H (Head Height)	J	Weight (kg)
3.25	16	19	16	26	63	43	110	75	1.7
4.75	19	22	19	31	76	51	129	89	1.9
6.5	22	25	22	36	83	58	143	102	3.2
13.5	35	38	35	57	133	92	227	238	6.54
17	38	42	38	60	146	99	249	175	8.19