



Load Pin Shackle

Robust, compact high tensile steel design from 2Te to 2000Te.



Options



Wireless & Internal Antenna



Matched Telemetry Displays



Rent this item



Cabled with 49.2ft flying cable



Data Logging Software Available



ATEX version

Ideal for precise tensile load monitoring for your lifting, static, pulling or weighing applications. Suitable for all industry sectors including marine, onshore, offshore and subsea.

You can be confident each shackle and load pin is up to the task with the certified load test before delivery.

Displays & Portable Case

Rugged case design with foam compartments to firmly hold the load link, telemetry display, spare set of batteries. Can also accommodate connecting cable for wired units and matched set of shackles.

- Lockable case
- Plastic case available from 3.25Te - 35Te
- Transport case from 55Te - 85Te
- Wooden case from 100Te or larger



Load Cell Data Logging

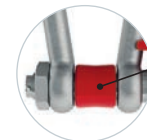
LMS-LOG100 Advanced data logging software provides real time monitoring of up to 100 load cell devices simultaneously.

Remotely access your data quickly and easily from a computer, tablet & smart phone via web browser. Export data in standard JSON or CSV formats with customisable reporting to suit your needs.

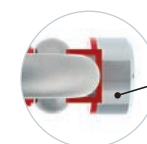


Features

- Design uses VanBeest™ Greenpin® shackles as standard others on request
- Load pins from high-strength stainless steel
- Safety factor of 5:1
- Up to 12 shackles can be linked to the handheld display for individual or summed load values
- Integral signal conditioning
- Subsea variants available on request
- Special design available on request



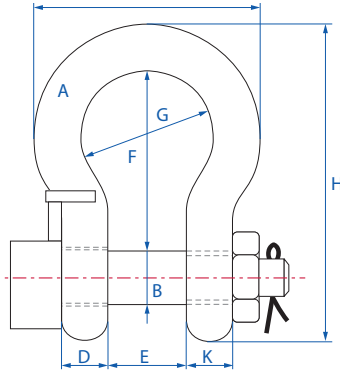
Centralising bobbin for improved load cell accuracy



Integrated aerial for added protection

Load Monitoring Systems Ltd
14 Silverburn Place,
Bridge of Don,
Aberdeen
AB23 8EG





Standard Designs (Van Beest Shackles)

Capacity T _e	Dimensions (mm)								Weight (kg)
	a	b	d	e	f	g	h	j	
3.25	16	19	16	26	63	43	110	75	1.7
4.75	19	22	19	31	76	51	129	89	1.9
6.5	22	25	22	36	83	58	143	102	3.2
13.5	35	38	35	57	133	92	227	238	6.54
25	45	50	45	74	178	126	300	216	14.22
35	50	57	50	83	197	138	331	238	19.85
55	65	70	65	105	260	180	433	310	39.59
85	75	83	73	127	329	190	527	340	62
120	95	95	91	147	400	238	647	428	110
150	105	108	102	169	410	275	688	485	160
200	120	130	113	179	513	290	838	530	235
250	130	140	118	205	554	305	904	565	285
300	140	150	123	205	618	305	996	585	340
400	170	175	164	231	668	325	1114	665	560
500	180	185	164	256	718	350	1190	710	685
600	200	205	189	282	718	375	1243	775	880
700	210	215	204	308	718	400	1263	820	980
800	210	220	204	308	718	400	1270	820	1100
900	220	230	215	328	718	420	1296	860	1280
1000	240	240	215	349	718	420	1336	900	1460

Special Designs (Crosby Shackles)

Capacity T _e	Dimensions (mm)								Weight (kg)
	a	b	d	e	f	g	h	j	
6.5	24.6	25.4	22.4	36.6	84	58	148	102	3.2
25	44.5	51	49	73	178	127	313	225	18

Applications

Calibration & Testing

- Water weights & bags
- Beam proof load
- Crane/hoist loads
- Bollard pull for vessels
- Force calibration
- Hydraulic presses
- Laboratory weighing & calibration

Industry Applications

- Wind turbine installations
- Warehouse despatch
- Subsea vehicle lifting
- Subsea cable laying, recovery & repair
- Subsea ploughs
- Anchor systems
- Mooring systems
- Under hook crane weighing
- Pipe laying ships
- Structural joints
- Hydraulic presses
- Lifting systems
- Aerospace development

Monitoring & Measurement

- Cable tension
- Towing
- Mooring
- Crane safe
- Anchor line tension
- Static wire tension
- Winch load
- Elevator cable
- Speed
- Payout distance
- Jacking force
- Pile force
- Sheave/pulley system line tension
- Container weighing
- Centre of gravity weighing
- Overload protection